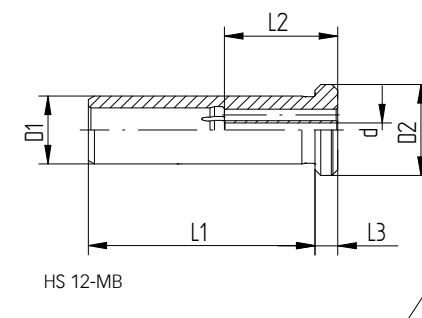
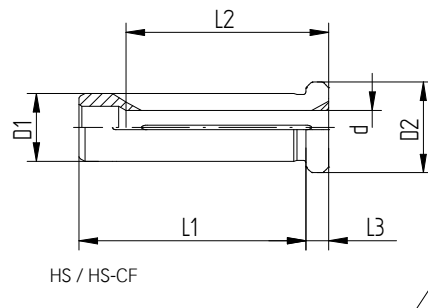


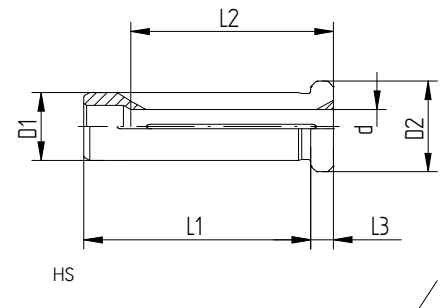
Abmessungen [mm]

Typ	d	d	D1	D2	L1	L2	L3
<b>HS 12 HS 12-CF</b>							
Ø 3,0	3	-	12	16	40	29	4
Ø 1/8"	3,175	1/8	12	16	40	29	4
Ø 4,0	4	-	12	16	40	29	4
Ø 3/16"	4,763	3/16	12	16	40	29	4
Ø 5,0	5	-	12	16	40	29	4
Ø 6,0	6	-	12	16	40	36	4
Ø 1/4"	6,35	1/4	12	16	40	36	4
Ø 7,0	7	-	12	16	40	37	4
Ø 5/16"	7,938	5/16	12	16	40	37	4
Ø 8,0	8	-	12	16	40	37	4
Ø 9,0	9	-	12	16	40	37	4
Ø 3/8"	9,525	3/8	12	16	40	40	4
Ø 10,0	10	-	12	16	40	40	4
<b>HS 12-MB</b>							
Ø 1,0	1	-	12	16	40	20	4
Ø 1,5	1,5	-	12	16	40	20	4
Ø 2,0	2	-	12	16	40	20	4
Ø 2,5	2,5	-	12	16	40	20	4
<b>HS 20 HS 20-CF</b>							
Ø 3,0	3	-	20	25	50	28	4
Ø 1/8"	3,175	1/8	20	25	50	28	4
Ø 4,0	4	-	20	25	50	28	4
Ø 3/16"	4,763	3/16	20	25	50	28	4
Ø 5,0	5	-	20	25	50	28	4
Ø 6,0	6	-	20	25	50	36	4
Ø 1/4"	6,35	1/4	20	25	50	36	4
Ø 7,0	7	-	20	25	50	38	4
Ø 5/16"	7,938	5/16	20	25	50	37	4
Ø 8,0	8	-	20	25	50	37	4
Ø 9,0	9	-	20	25	50	38	4
Ø 3/8"	9,525	3/8	20	25	50	36	4
Ø 10,0	10	-	20	25	50	40	4
Ø 11,0	11	-	20	25	50	40	4
Ø 12,0	12	-	20	25	50	45	4
Ø 1/2"	12,7	1/2	20	25	50	45	4
Ø 13,0	13	-	20	25	50	45	4
Ø 14,0	14	-	20	25	50	45	4
Ø 15,0	15	-	20	25	50	45	4
Ø 5/8"	15,875	5/8	20	25	50	48	4
Ø 16,0	16	-	20	25	50	48	4



Abmessungen [mm]

Typ	d	d	D1	D2	L1	L2	L3
<b>HS 25</b>							
Ø 3,0	3	–	25	30	56	29	4
Ø 1/8"	3,175	1/8	25	30	56	29	4
Ø 4,0	4	–	25	30	56	29	4
Ø 3/16"	4,763	3/16	25	30	56	29	4
Ø 5,0	5	–	25	30	56	29	4
Ø 6,0	6	–	25	30	56	37	4
Ø 1/4"	6,35	1/4	25	30	56	37	4
Ø 7,0	7	–	25	30	56	37	4
Ø 5/16"	7,938	5/16	25	30	56	37	4
Ø 8,0	8	–	25	30	56	37	4
Ø 9,0	9	–	25	30	56	38	4
Ø 3/8"	9,525	3/8	25	30	56	38	4
Ø 10,0	10	–	25	30	56	40	4
Ø 7/16"	11,112	7/16	25	30	56	40	4
Ø 12,0	12	–	25	30	56	46	4
Ø 1/2"	12,7	1/2	25	30	56	46	4
Ø 14,0	14	–	25	30	56	47	4
Ø 9/16"	14,288	9/16	25	30	56	47	4
Ø 5/8"	15,875	5/8	25	30	56	48	4
Ø 16,0	16	–	25	30	56	48	4
Ø 11/16"	17,461	11/16	25	30	56	48	4
Ø 18,0	18	–	25	30	56	48	4
Ø 3/4"	19,05	3/4	25	30	56	48	4
Ø 20,0	20	–	25	30	56	50	4
Ø 13/16"	20,638	13/16	25	30	56	50	4



Expertentipp

Beim Spannen ohne Werkzeug können Reduzierhülsen beschädigt werden.

Abmessungen [mm]

Typ	d	d	D1	D2	L1	L2	L3
HS 32 HS 32-CF							
Ø 3/16"	4,763	3/16	32	36	60	29	4
Ø 5,0	5	-	32	36	60	29	4
Ø 6,0	6	-	32	36	60	36	4
Ø 1/4"	6,35	1/4	32	36	60	36	4
Ø 7,0	7	-	32	36	60	37	4
Ø 5/16"	7,938	5/16	32	36	60	36	4
Ø 8,0	8	-	32	36	60	36	4
Ø 9,0	9	-	32	36	60	37	4
Ø 3/8"	9,525	3/8	32	36	60	37	4
Ø 10,0	10	-	32	36	60	40	4
Ø 11,0	11	-	32	36	60	40	4
Ø 7/16"	11,112	7/16	32	36	60	45	4
Ø 12,0	12	-	32	36	60	45	4
Ø 1/2"	12,7	1/2	32	36	60	45	4
Ø 13,0	13	-	32	36	60	45	4
Ø 14,0	14	-	32	36	60	46	4
Ø 9/16"	14,288	9/16	32	36	60	46	4
Ø 15,0	15	-	32	36	60	46	4
Ø 5/8"	15,875	5/8	32	36	60	46	4
Ø 16,0	16	-	32	36	60	48	4
Ø 17,0	17	-	32	36	60	48	4
Ø 11/16"	17,461	11/16	32	36	60	48	4
Ø 18,0	18	-	32	36	60	49	4
Ø 19,0	19	-	32	36	60	49	4
Ø 3/4"	19,05	3/4	32	36	60	50	4
Ø 20,0	20	-	32	36	60	50	4
Ø 13/16"	20,638	13/16	32	36	60	50	4
Ø 22,0	22	-	32	36	60	50	4
Ø 7/8"	22,225	7/8	32	36	60	50	4
Ø 15/16"	23,813	15/16	32	36	60	52	4
Ø 25,0	25	-	32	36	60	56	4
Ø 1"	25,4	1	32	36	60	56	4

